



## Basic Programming Instructions for Networking 2 Axxess Systems

1. Connect programming PC to node 1. Go to "Programming/System/Devices & Feature Codes/Nodes" and create node 2. (Because you are connected to node 1 in programming the remote node will be node 2). **(Image 1)**

The database will restart after remote node is created. The extension number for this node at default is 97002 (version 6.0)

2. Reconnect to node 1 programming. Go back into "System/Devices & Feature Codes/Nodes" and verify you have 2 nodes. Local and 97002 (version 6.0) **(Image 2)**

3. Go into "System/Cabinets/T1 Primary Rate Card/T1 Circuits" and change all circuits to B-channel. Accept the default extension numbers. **(Image 3)**

4. Go into "System/Cabinets/T1 Primary Rate Card" and change central office switch type to private networking. This will dedicate all B-channels to a node trunk group. Accept the default node trunk group extension number 97501 (version 6.0). **(Image 4)**

5. Go into "System/Devices and Feature codes/Nodes/97002/ Node Trunk Groups" and add node trunk group 97501 to node trunk group list. **(Image 5)**

6. Exit programming & disconnect programming cable from node 1 system. Connect to node 2 system.

7. Enter programming on node 2. Go to "System/Devices and Feature Codes/Nodes" and change node number of local node from 1 to 2. This will cause a system reset.

8. Reconnect to node 2 programming, enter "System Devices and Feature Codes/Nodes" and create node 1. (Because you are connected to node 2 the remote node will now be node 1). The extension number for this node is 97001 at default (version 6.0). The programming application will shut down after creating. **(Image 8)**

9. Reconnect to node 2 programming, go to "System/Devices and Feature Codes/Nodes" and verify that you have 2 nodes: Local node number 2 and 97001 (version 6.0) node number 1. **(Image 9)**

10. Go to "System/Cabinets/T1 Primary Rate Card/T1 Circuits" and change all channels to B-channels. Accept the default extension numbers. **(Image 10)**

11. Go to "System/Cabinets/T1 Primary Rate Card" and change central office switch type to "Private Networking". This will dedicate all B-channels to a node trunk group.

**Courtesy of Main Resource, Inc. Visit us at [www.MainResource.com](http://www.MainResource.com) or call 800 362-6740 for all your Inter-tel needs.**

12. Go to "System/Devices and Feature Codes/Nodes/ 97001/Node Trunk Groups" and add node trunk group 97501 to node trunk group list.
13. Go to "System/Devices and Feature Codes/Stations/Local" and change extension numbers so they do not match extensions on other node. **(Image 13)**
14. From a Keypad on node 2, dial "97001" (version 6.0) to verify that the 2 nodes are working. You should get IC dial tone; dial "1000" and node 1 keypad 1000 should ring and answer. Dial "97002" from a keypad on node 1 and dial "1050" when you get IC dial tone. Extension 1050 on node 2 should ring and answer.
15. From either node go to "Operations/Export Import devices". **(Image 15)**
16. Select "Import Operation/Keypad Device Type/1(remote node number)". Then select "Start". **(Image 16)**
17. After the import is done, database programming will close. Reconnect to the system programming. Go to "Operations/Export Import devices". Select "Export Operations/Keypad Device Type/1(remote node number)" (from node 2). **(Image 17)**
18. Exit programming and restart the system. You should be able to call node 2 keypad from node 1 by dialing node 2 extension numbers.

**Note: DSS/BLF keys display status of off node extensions, but the BLF light is very slow.**

**You cannot dial access a trunk group or trunk on a remote node or a networking system. You must use Automatic Route Selection, (ARS).**

Image 1

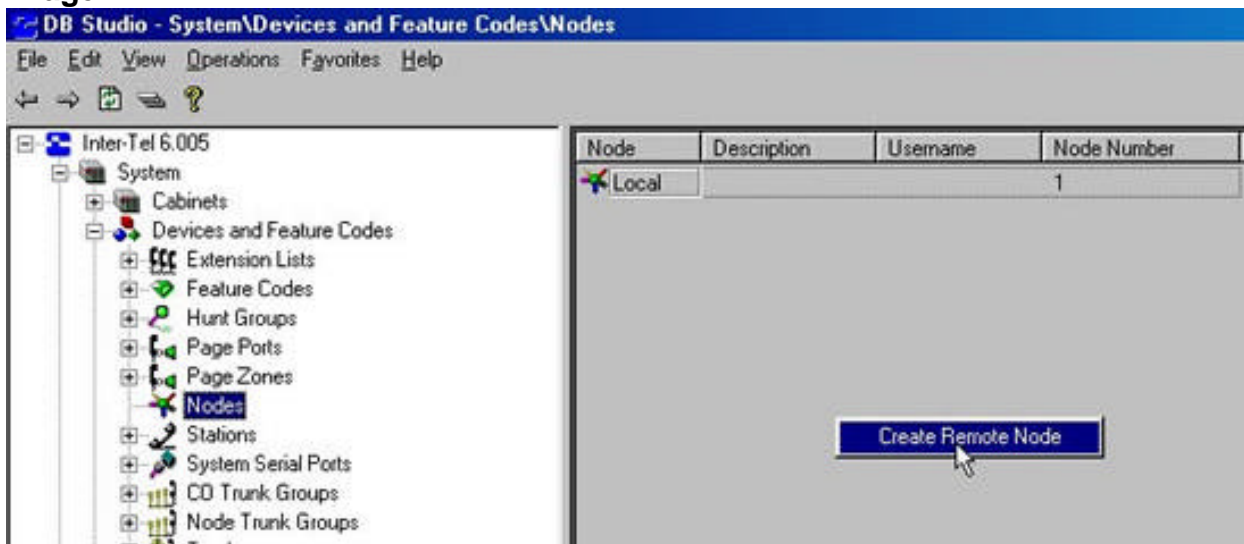


Image 2

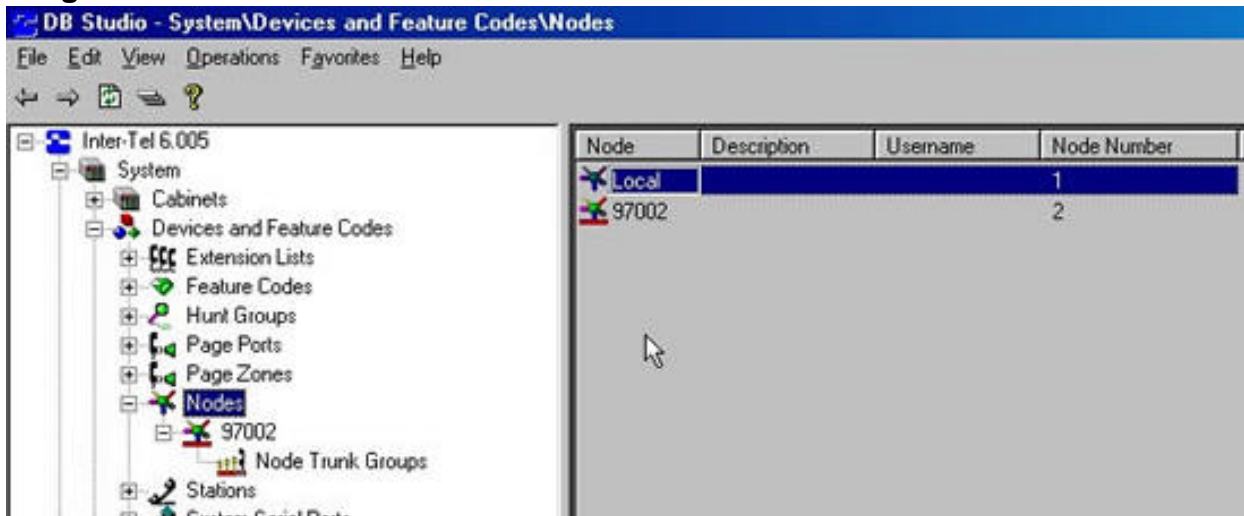
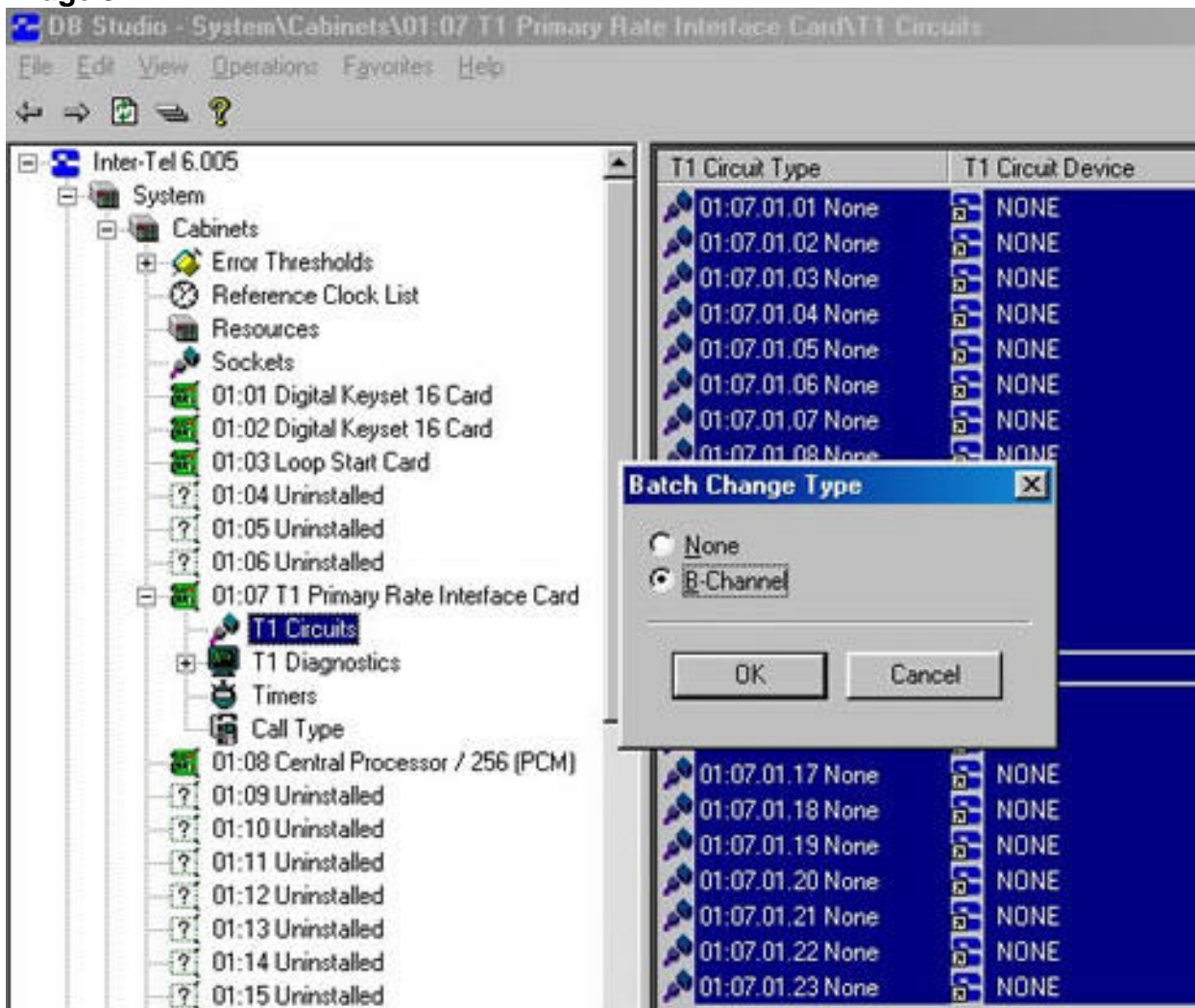
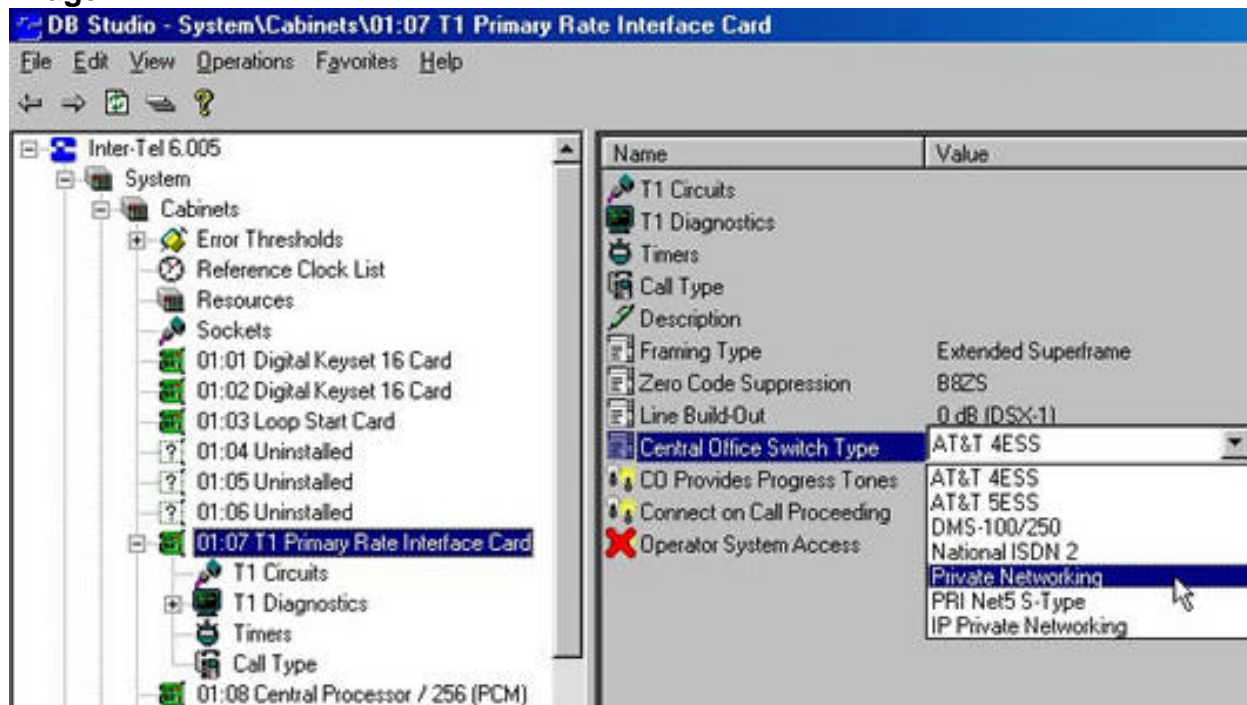


Image 3



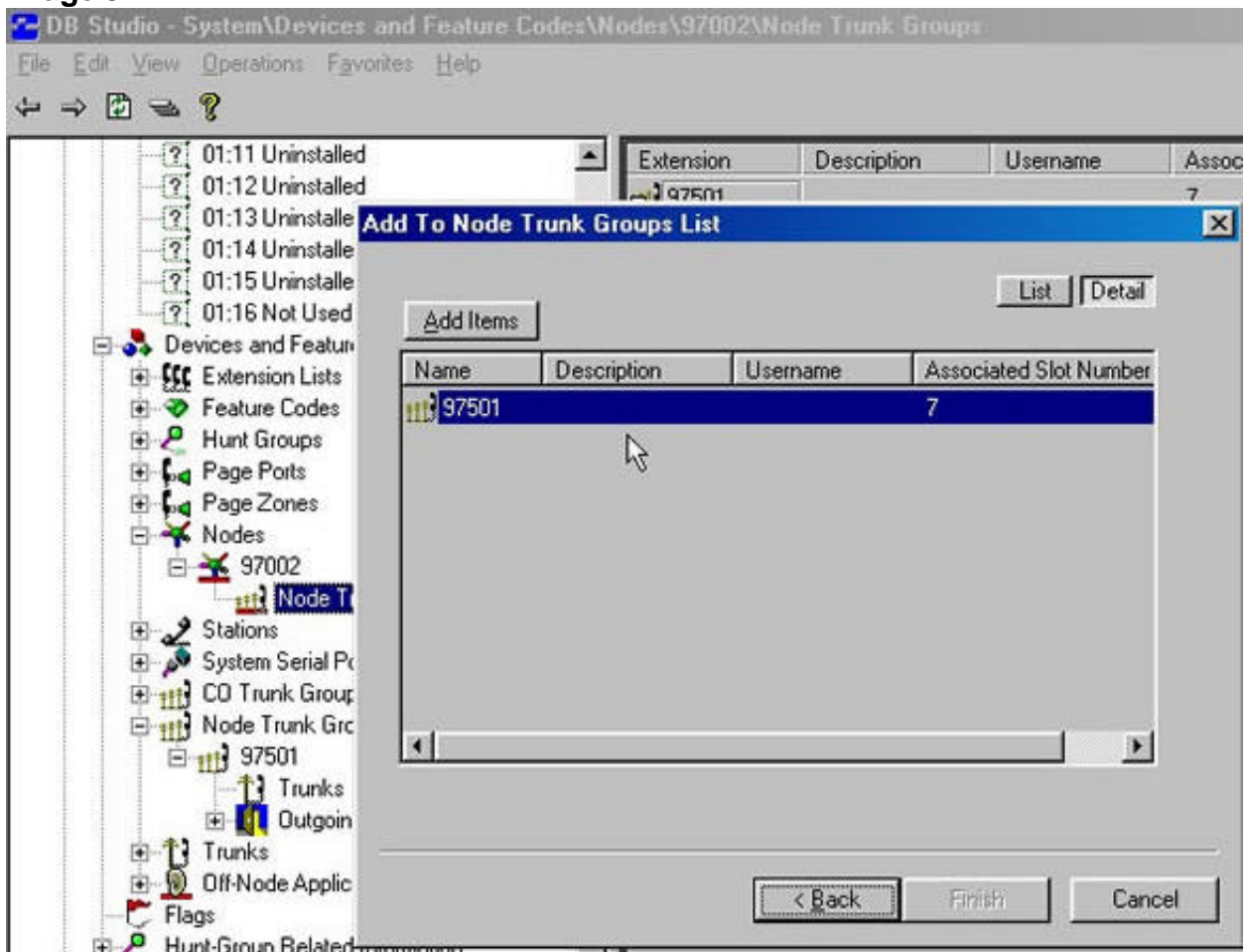
Courtesy of Main Resource, Inc. Visit us at [www.MainResource.com](http://www.MainResource.com) or call 800 362-6740 for all your Inter-tel needs.

Image 4



Courtesy of Main Resource, Inc. Visit us at [www.MainResource.com](http://www.MainResource.com) or call 800 362-6740 for all your Inter-tel needs.

Image 5



Courtesy of Main Resource, Inc. Visit us at [www.MainResource.com](http://www.MainResource.com) or call 800 362-6740 for all your Inter-tel needs.

Image 8

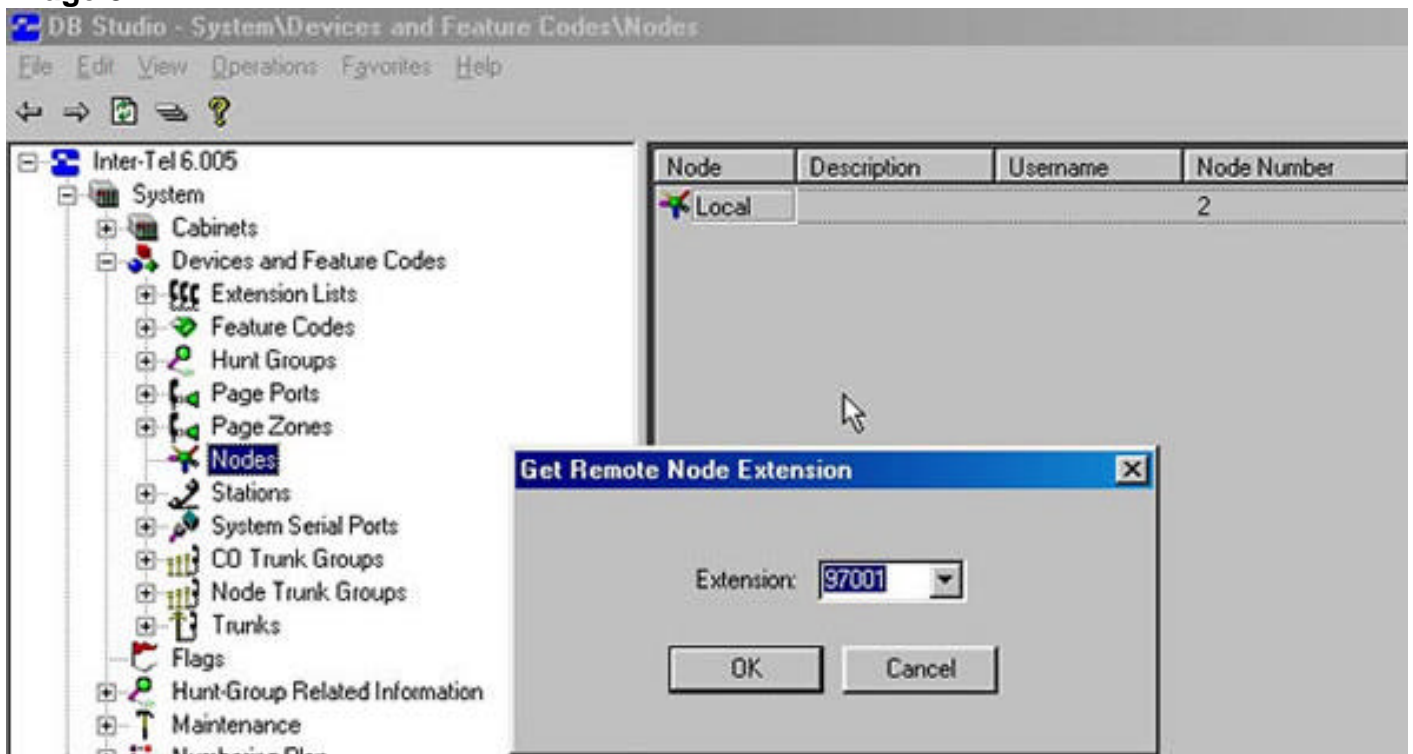


Image 9

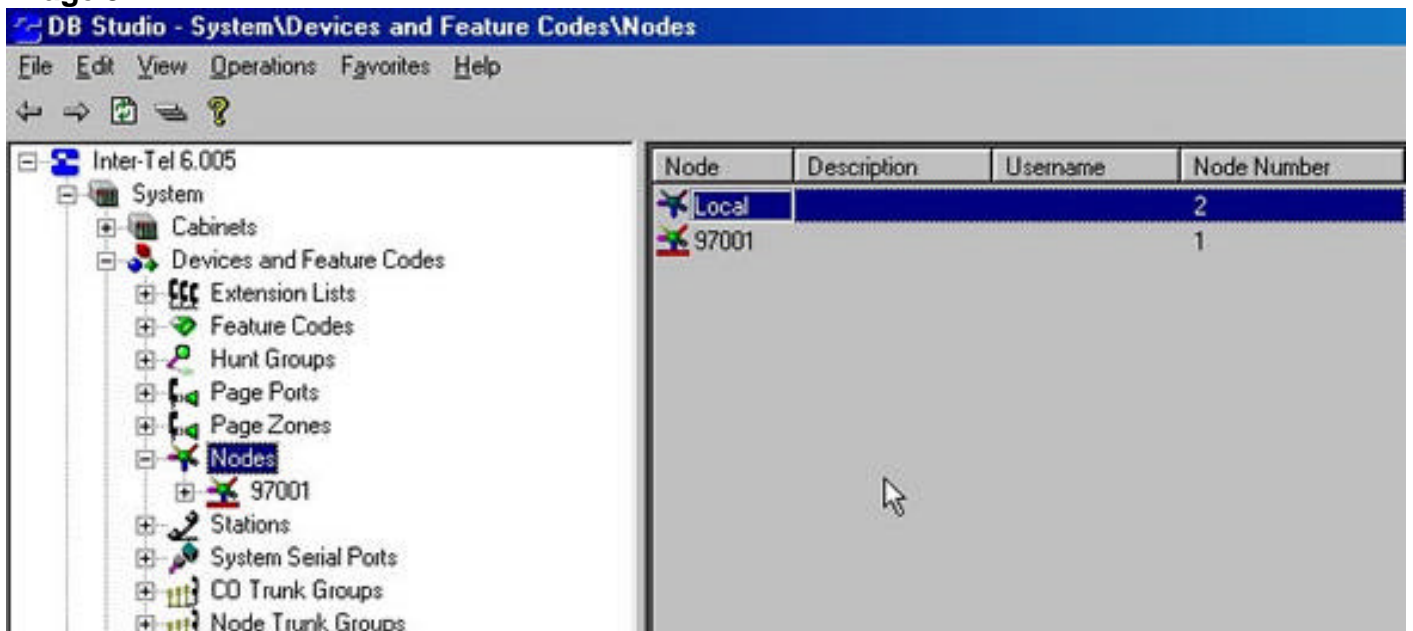


Image 10

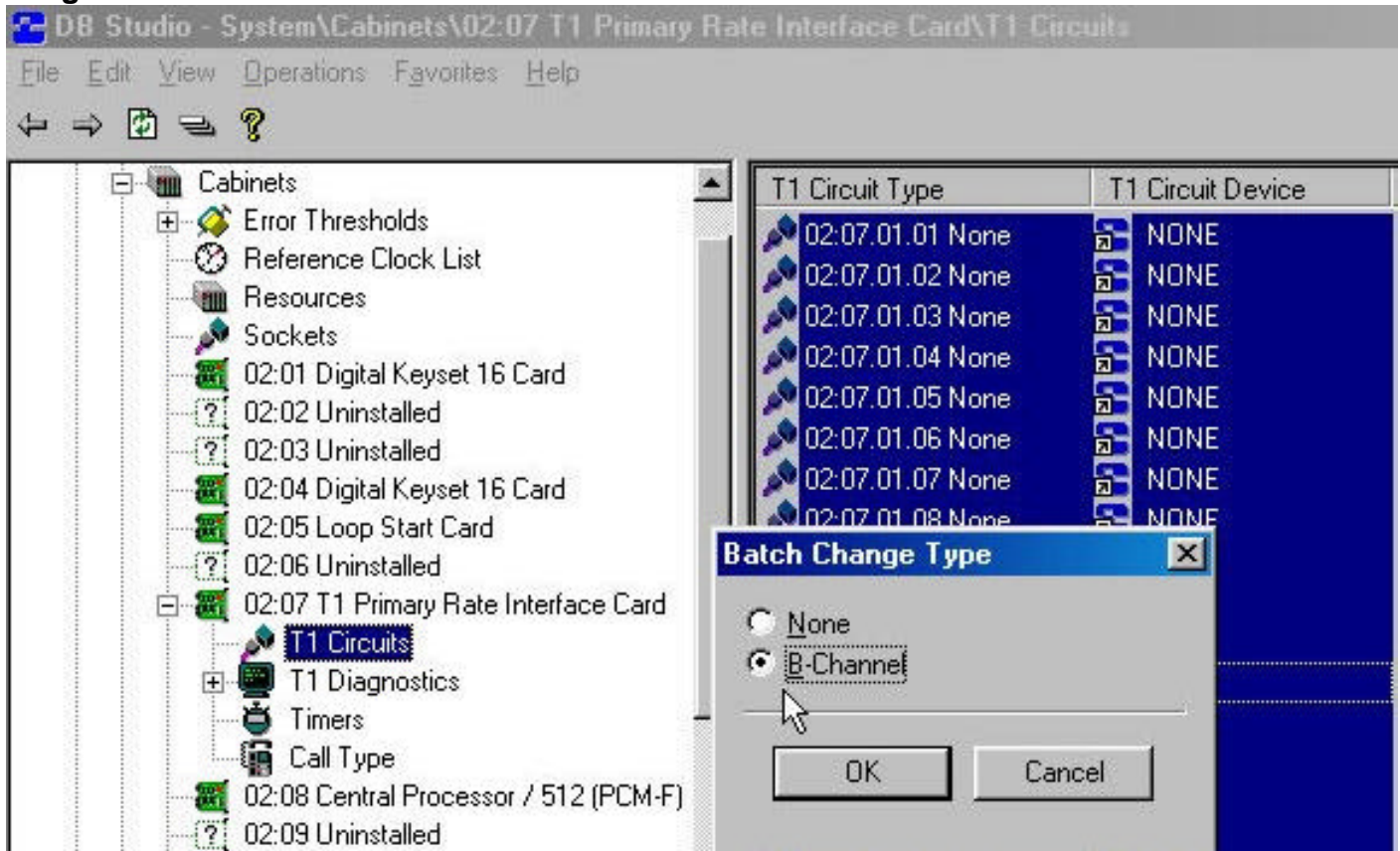
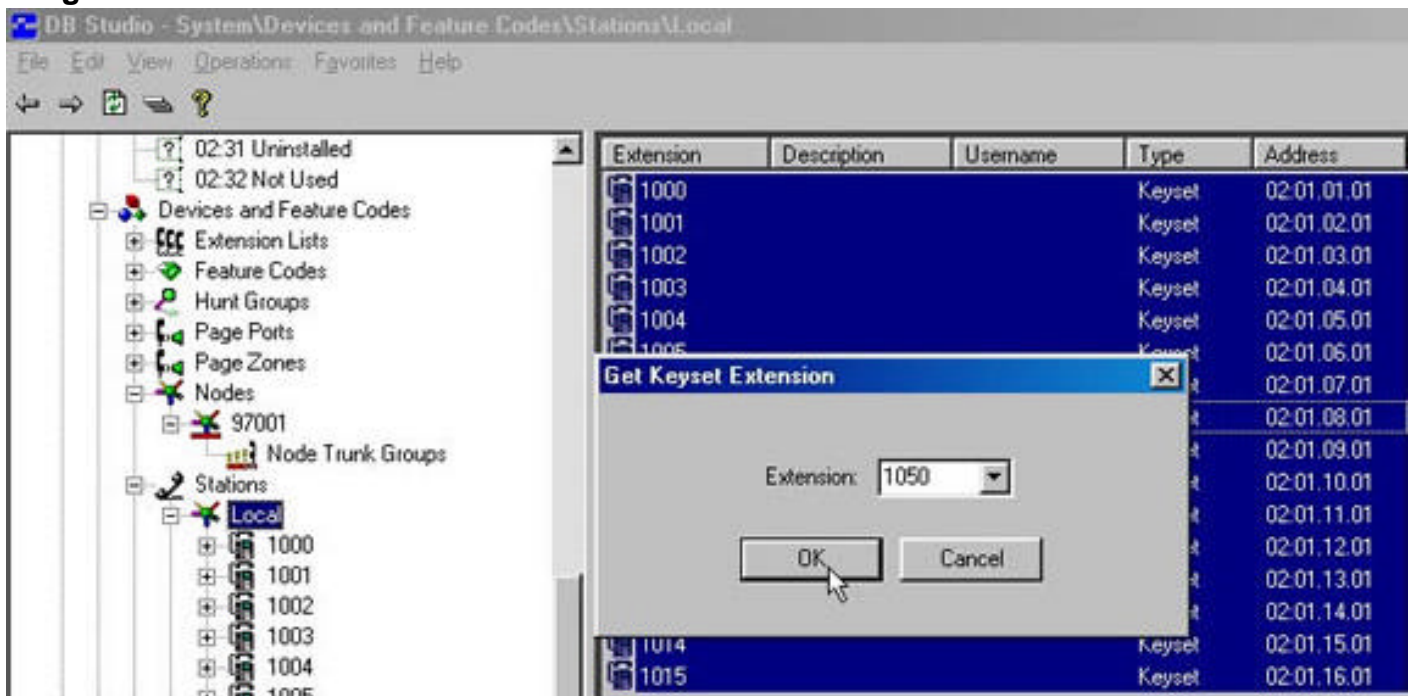


Image 13



Courtesy of Main Resource, Inc. Visit us at [www.MainResource.com](http://www.MainResource.com) or call 800 362-6740 for all your Inter-tel needs.

Image 15

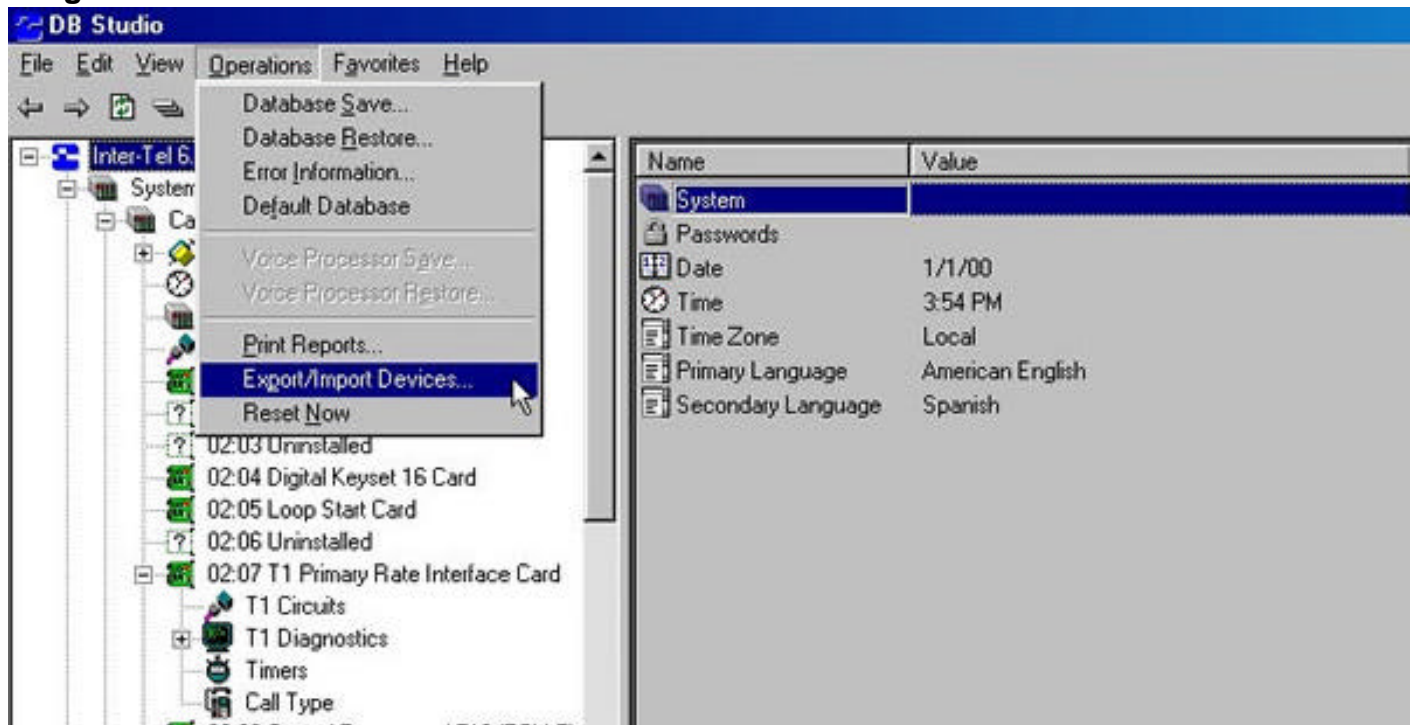
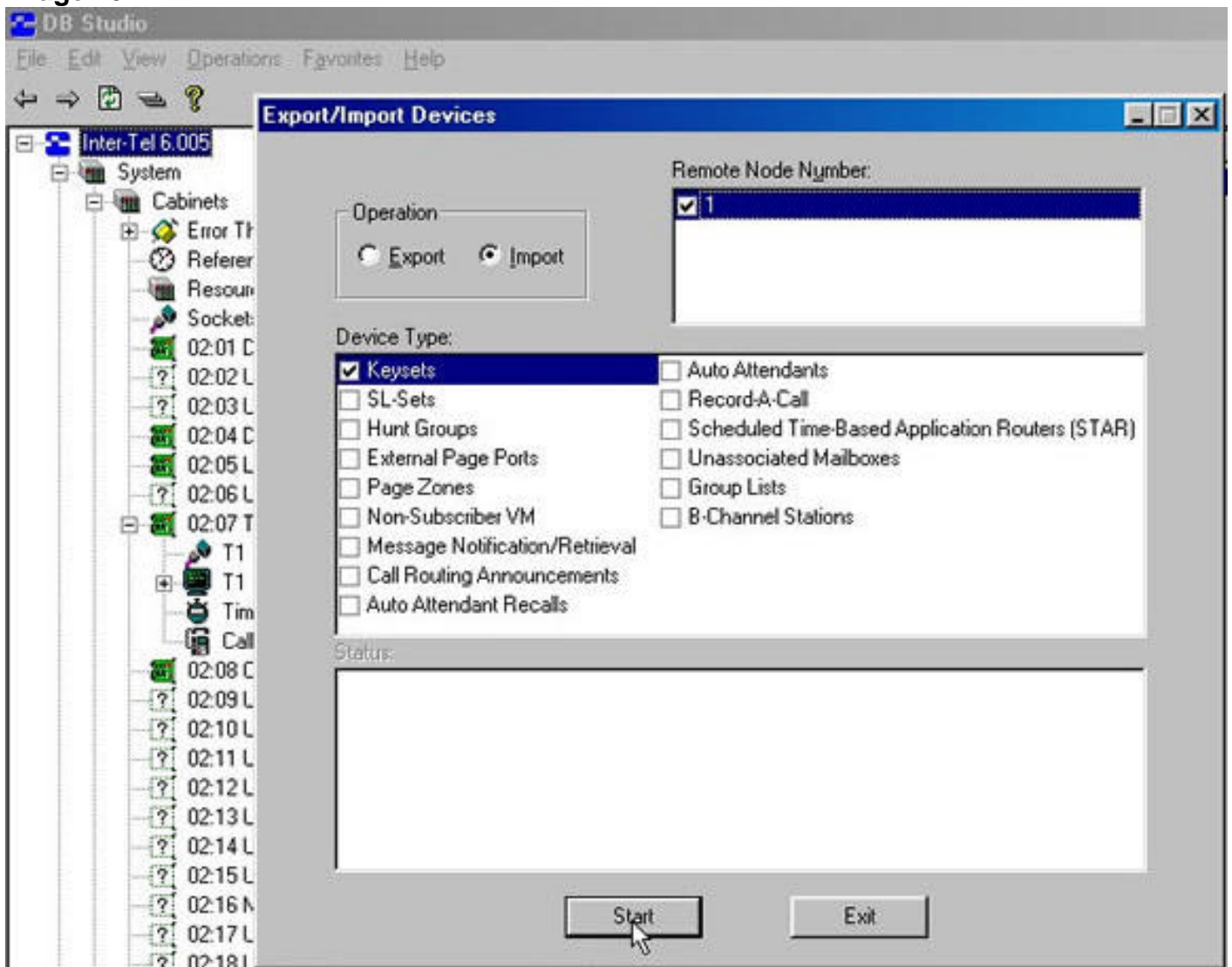


Image 16



Courtesy of Main Resource, Inc. Visit us at [www.MainResource.com](http://www.MainResource.com) or call 800 362-6740 for all your Inter-tel needs.

Image 17

